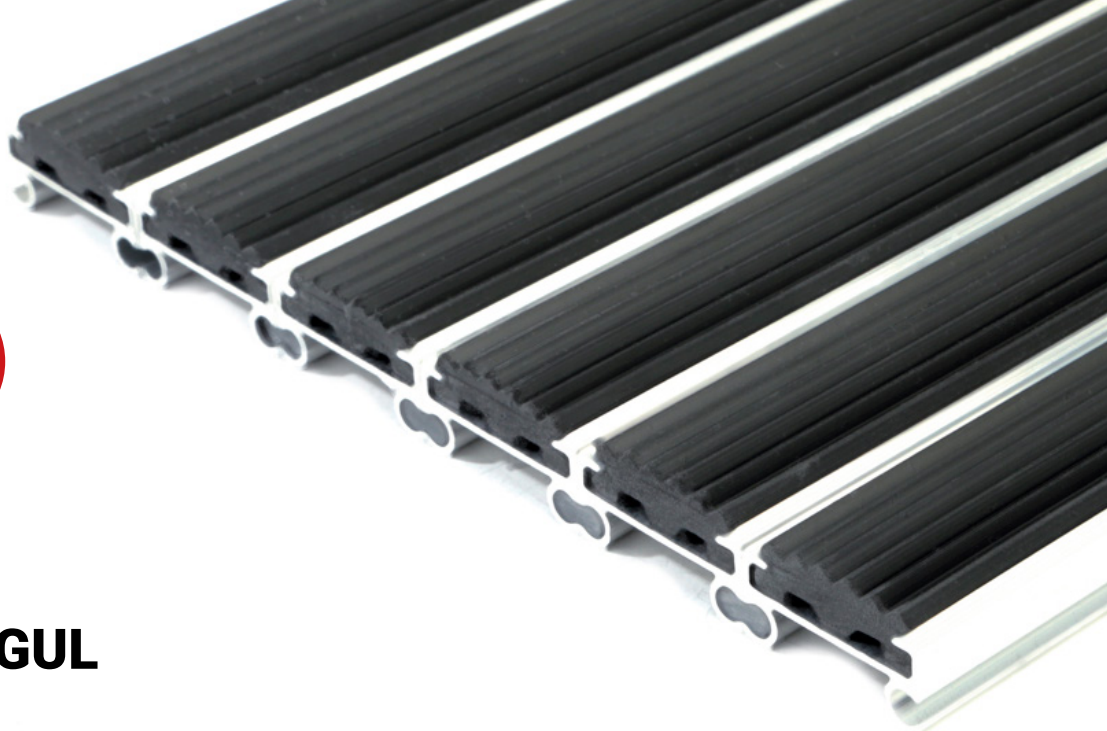


1  
ZONE

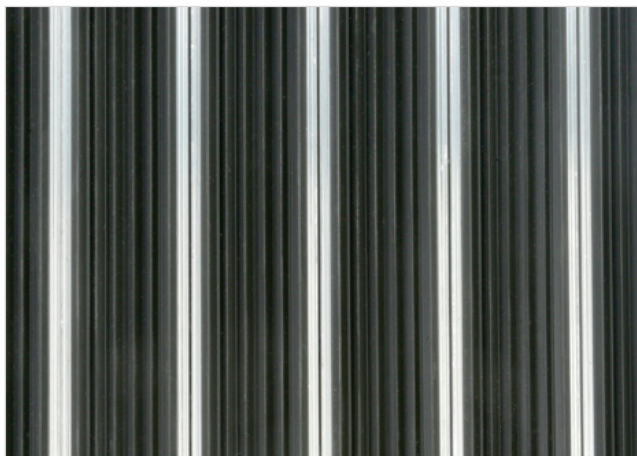
16  
HEIGHT (mm)



## STILMAT MOGUL

Rubber - closed

Code: MCR



Mogul is economical alu doormat , which will fulfill your expectations for any entrance with low visitor frequency. The alternative system with closed design. It is a modern aluminum doormat, with 16 mm height and profiled rubber inserts. Ideal for medium pit depth for picking up coarse dirt. Suitable for outdoor use, for entrances with normal visitor frequency. Imagine your impressive entrance with MOGUL STILMAT doormat.



Ideal for: Coarse dirt



The weather-proof solution



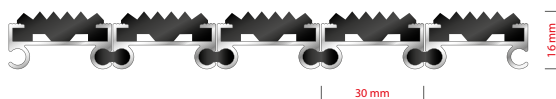
Roll-over and drive-over capability: Wheelchairs, Prams, Hand and Light shopping trolleys



Aluminum coating: Fully anodized



Logo options: Logo engraving



# STILMAT MOGUL

Rubber - closed

**Code: MCR**

Model	MOGUL (Rubber )
Tread surface (inlay):	Profiled rubber inserts. Weather-proof
Ideal for	Coarse dirt
Colors:	Black, Grey, Brown...
Version	Closed system
Code	MCR
Approx. height (mm)	16
Entrance position	Outdoors
Zones: I – II - III	Zone: I
Load	Normal
Footfall	Daily footfall up to 1000
Roll-over and drive-over capability:	Wheelchairs, Prams, Hand and Light shopping trolleys
Support chassis	Made from rigid aluminum
Aluminum material thickness (mm)	1.0
Connection	Strong PVC connection strip, the entire width
Standard profile clearance approx. (mm)	0 mm closed system
Slip resistance	R 9 slip resistance as per DIN 51130
Max width/profile length for each individual section (mm):	6000
Max depth/walking depth for individual units (mm):	Any
Mat divisions as per factory standards or customer specifications	Recommended maximum mat weight of 45 kg
Depth for individual units (mm):	Cca 16
Stationary load kg/100cm <sup>2</sup>	1500
Weight (kg/m <sup>2</sup> )	Cca 17
Logo options	Logo engraving, rubber logo, LED logo
Contact	STILMAT

Guarantee: 5 years on aluminum parts and construction