

1
ZONE

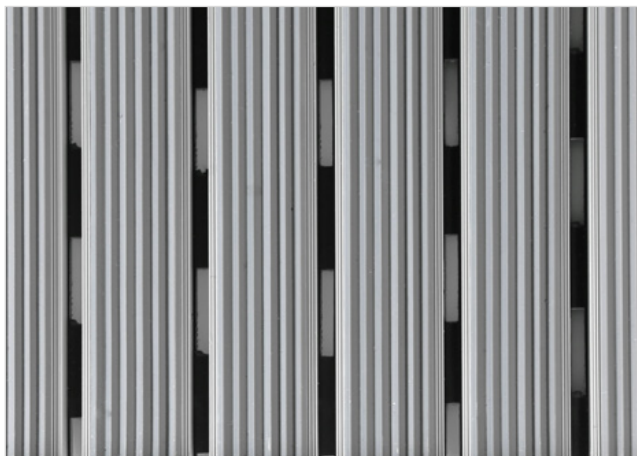
16
HEIGHT (mm)



STILMAT MOGUL

Rubber - open

Code: MOR



Mogul is economical aludoormat , which will fulfill your expectations for any entrance with low visitor frequency. It is a modern design aluminum doormat, with 16 mm height and profiled rubber inserts. Ideal for medium pit depth for picking up coarse dirt. Suitable for outdoor use, for entrances with normal visitor frequency. Imagine your impressive entrance with MOGUL STILMAT doormat.



Ideal for: Coarse dirt



The weather-proof solution



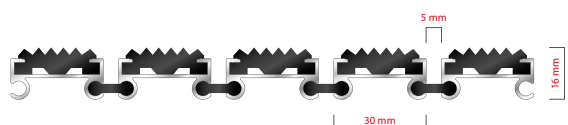
Roll-over and drive-over capability: Wheelchairs, Prams, Hand and Light shopping trolleys



Aluminum coating: Fully anodized



Logo options: Logo engraving



STILMAT MOGUL

Rubber - open

Code: MOR

| Model | MOGUL (Rubber) |
|---|--|
| Tread surface (inlay): | Profiled rubber inserts. Weather-proof |
| Ideal for | Coarse dirt |
| Colors: | Black, Grey, Brown... |
| Version | Open system |
| Code | MOR |
| Approx. height (mm) | 16 |
| Entrance position | Outdoors |
| Zones: I – II - III | Zone: I |
| Load | Normal |
| Footfall | Daily footfall up to 1000 |
| Roll-over and drive-over capability: | Wheelchairs, Prams, Hand and Light shopping trolleys |
| Support chassis | Made from rigid aluminum, no under rubber |
| Aluminum material thickness (mm) | 1.0 |
| Connection | Strong and flexible PVC connection strip, the entire width |
| Standard profile clearance approx. (mm) | 5 mm (optional 3mm for automatic/revolving doors) |
| Slip resistance | R 9 slip resistance as per DIN 51130 |
| Max width/profile length for each individual section (mm): | 6000 |
| Max depth/walking depth for individual units (mm): | Any |
| Mat divisions as per factory standards or customer specifications | Recommended maximum mat weight of 45 kg |
| Depth for individual units (mm): | Cca 16 |
| Stationary load kg/100cm ² | 1500 |
| Weight (kg/m ²) | Cca 15 |
| Logo options | Logo engraving, rubber logo, LED logo |
| Contact | STILMAT |

Guarantee: 5 years on aluminum parts and construction