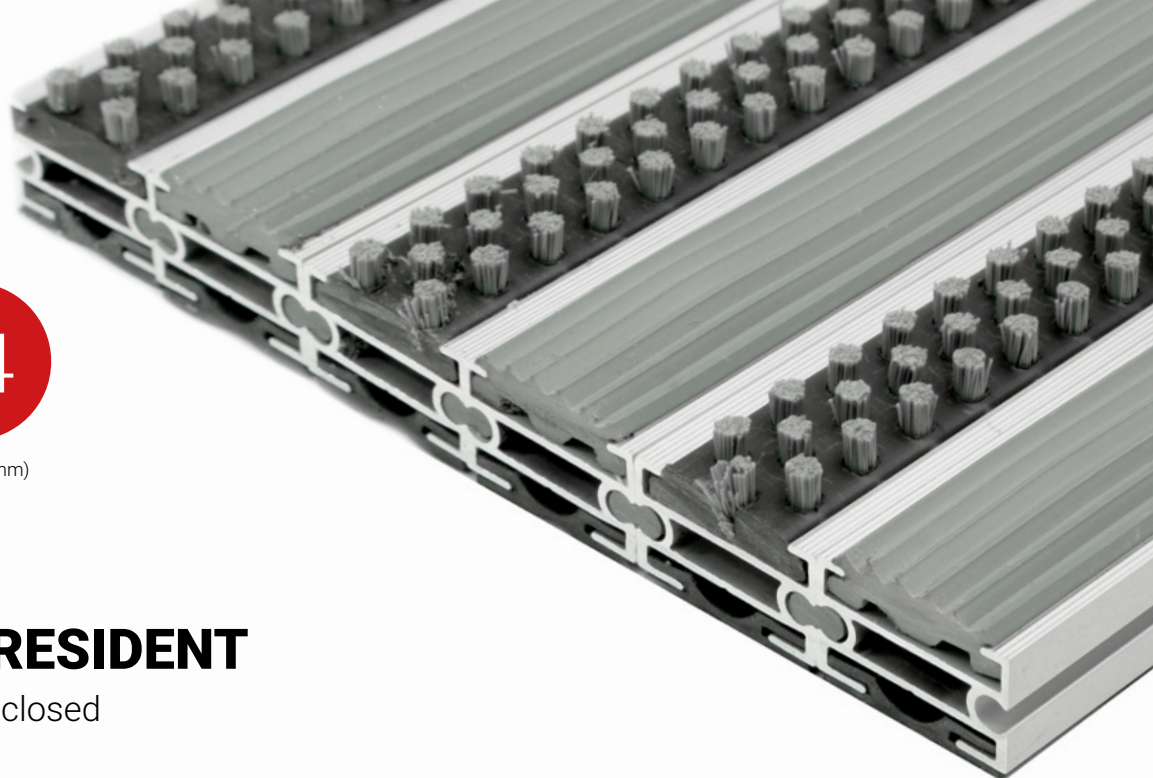


1
ZONE

24
HEIGHT (mm)



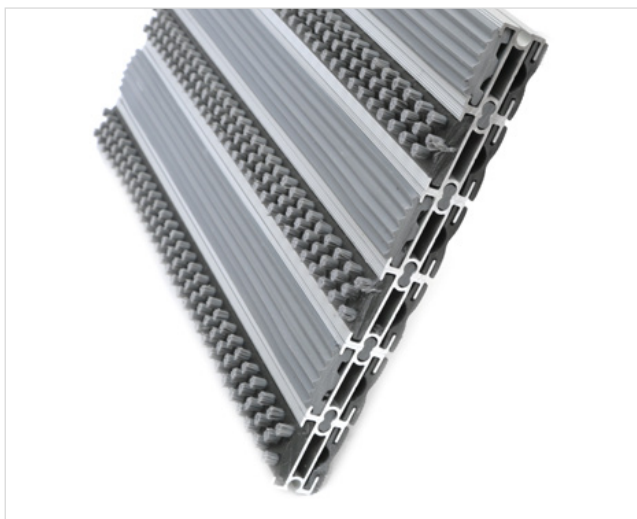
STILMAT PRESIDENT

Lux Brush/Rubber - closed

Code: SCBR



The PRESIDENT of all aluminum doormats. Base model from which everything starts. Proven design, rigid profiles. The alternative system with closed design. Imagine your impressive entrance with PRESIDENT STILMAT doormat. Suitable for outdoor use and for heavy to extreme frequency of passers. This model is ideal for picking up coarse dirt. Anodized aluminum doormat model with 24mm height. This model is with thorough brushes for an extra cleaning effect and profiled rubber inserts. The weather-proof solution among the robust solution.



Ideal for: Coarse dirt



The weather-proof solution



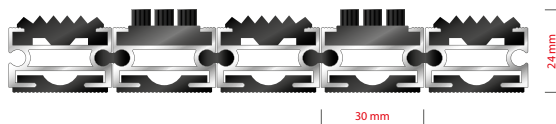
Roll-over and drive-over capability: Wheelchairs, Prams, Hand and Light shopping trolleys



Aluminum coating: Fully anodized



Logo options: Logo engraving



STILMAT PRESIDENT

Lux Brush/Rubber - closed

Code: SCBR

Model	PRESIDENT (Lux Brush & Rubber)
Tread surface (inlay):	Lux brushes recessed, robust and profiled rubber inserts. Weather-proof
Ideal for	Coarse dirt
Colors:	Black, Grey, Brown...
Version	Closed system
Code	SCBR
Approx. height (mm)	24
Entrance position	Outdoors
Zones: I – II - III	Zone: I
Load	Extreme
Footfall	Daily footfall of 2000 and up
Roll-over and drive-over capability:	Wheelchairs, Prams, Hand and Light shopping trolleys
Support chassis	Made from rigid anodized aluminum with rubber sound insulation underlay
Aluminum coating:	Fully anodized, to increase resistance to corrosion and wear. More aesthetically pleasing finish and harder surface than pure aluminum.
Aluminum material thickness (mm)	1.2
Connection	Strong PVC connection strip, the entire width
Standard profile clearance approx. (mm)	0 mm closed system
Slip resistance	R 10 slip resistance as per DIN 51130
Max width/profile length for each individual section (mm):	6000
Max depth/walking depth for individual units (mm):	Any
Mat divisions as per factory standards or customer specifications	Recommended maximum mat weight of 45 kg
Depth for individual units (mm):	Cca 24
Stationary load kg/100cm ²	2200
Weight (kg/m ²)	Cca 25
Logo options	Logo engraving
Contact	STILMAT

Garancija: 5 godina na aluminijumske delove i konstrukciju