



# STILMAT PERFORMANCE™ GREEN CONCEPT

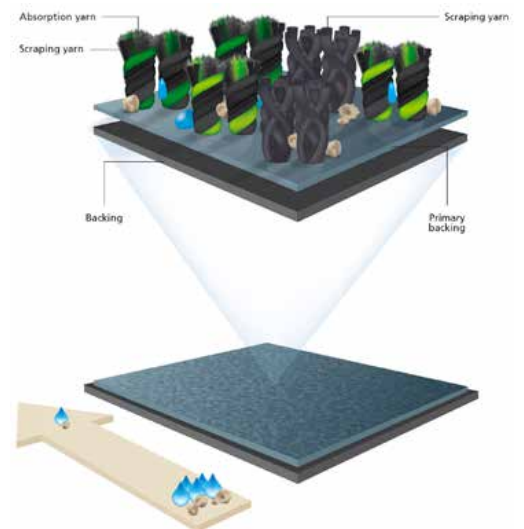
Code: PF-DCCGC



**PERFORMANCE** is Eco-friendly entrance mat and it is a part of **STILMAT Green Concept** program. This entrance mat offers the highest level of performance and design, while complementing modern, high traffic environments with its attractive appearance. Get acquainted with the **PERFORMANCE STILMAT – Green concept**.

## Description

Special and high quality Dust Control Carpet rug for covered and indoor areas. Manufactured from ECONYL material with s-FLX backing (PVC FREE), in accordance with A+, VOC, EMS 14001 standards, which are part of LEED standard. A flexible backing of PU which neither contains Chlorides nor Plasticizers.



- Eco-Friendly carpet which is in accordance with A+,VOC, EMS and LEED standard
- Better Scraping – Where moisture absorption and dirt scraping are key considerations.
- Anti static- Dirt and moisture are stopped and contained
- Absorption capacity – 4.8 l/m2
- Total weight 2.800g/m2
- Savings on cleaning cost up to 65%
- Fine dirt in the air will be prevented and considerable cost in cleaning avoided
- Flammability – Fire Safety - Euroclass 13501 (Norm Bfl-s1)
- Health- Improves indoor air quality (Sick building syndrome)
- Slip resistance EN13893 – DS
- Reduces noise levels – Height 8 mm with heavy coating PU (PVC FREE) backing
- High quality yarn – Velour structure with a high pile. The pile design, comprising both coarse and soft yarns
- Rubber border/edge – upon request
- Luxury appearance-dirt is barely visible in the mat's blended design. Fits any setting
- Made in Netherlands



# STILMAT PERFORMANCE™ FIRE GUARD

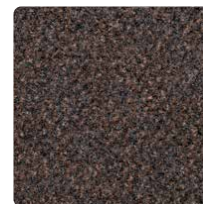
Code: PF-DCCGC



Model	PERFORMANCE STILMAT
Group	Green concept, Indoor, High traffic, super absorbing
Code	PF-DCCGC
Pile material	100% recycled (Econyl ) Polyamide
Backing	PU
Primary backing	Nonwoven PET/PA
Yarn construction	Velour
Pattern	MIXED
Colors	9
Pile weight ISO 8543	± 900 gram/m <sup>2</sup>
Total weight ISO 8543	± 2.800 gram/m <sup>2</sup>
Pile height ISO 1766	± 6.0 mm
Total height ISO 1765	± 8.0 mm
Pile density ISO 8543	0,148 g/cm <sup>3</sup>
Number of stitches ISO 1763	± 95.800 /m <sup>2</sup>
Use classification EN 1307	33
Wearing class EN 1963	33
Comfort EN 1307	LC3
Suitability for stairs EN 1963	Intensive use
Suitability for castor chairs EN 985	Intensive use
Dimension stability ISO 2551	<0,4%
Light fastness ISO 105 B02	>7
Water fastness ISO 105 B01	4
Rubbing fastness ISO 105 X12	4
Salt water ISO 105 E02	4
Shampoo BS 1006	4
Organic solvents ISO 105 X05	4
Absorption capacity TNO W6034	+ 4.8 l/m <sup>2</sup>
Flammability Euroclass EN13501	Cfl /s1
Slip Resistance EN13893	DS
Static charge ISO 6356	2.0 kV
Sand absorption 1-3	3
Optical class 1-5	4.5
Sizes rolls	2000mm Width
Rubber border/edge	Upon request
Quality class	Luxury, for commercial buildings
Ideal position on entrance	Covered or indoor space with high traffic
Zone: I – II – III	II, III
Cleaning	Dirt removal with powerful brush vacuum cleaner. The spray extraction process is recommended for periodic basic cleaning. Cleaning with plenty of water is absolutely no problem, water temperature should not be above 40°C. Do not use chlorinated hydrocarbon (Tetra).



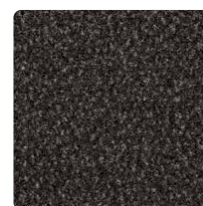
Black 130



Slate brown 131



Brown 132



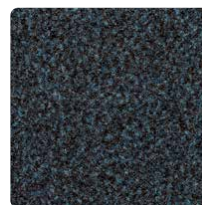
Dark brown 134



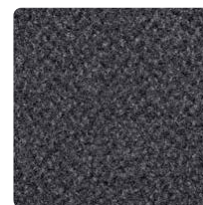
Grey 135



Blue 136



Green 137



Slate grey 138



Red 139

	High traffic	Medium traffic
Not combined with outdoor matting	A	B
Combined with outdoor matting	C	D
Outdoor matting	E	